

Physical Control

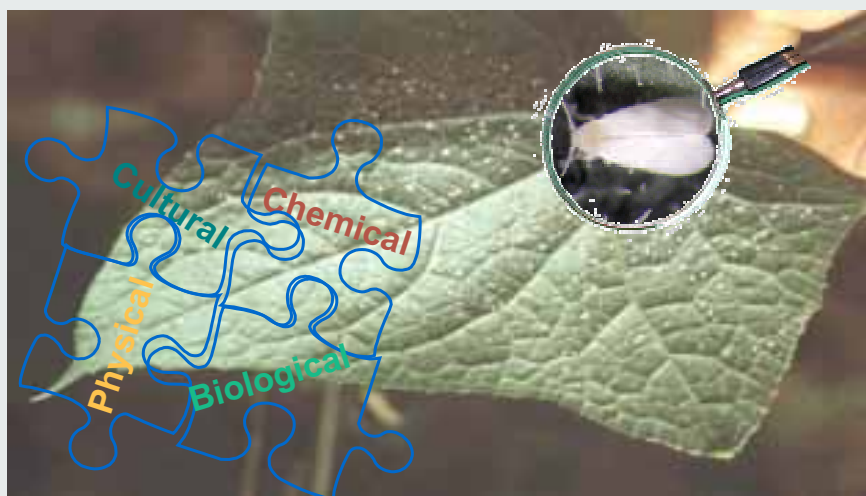


Screened vents

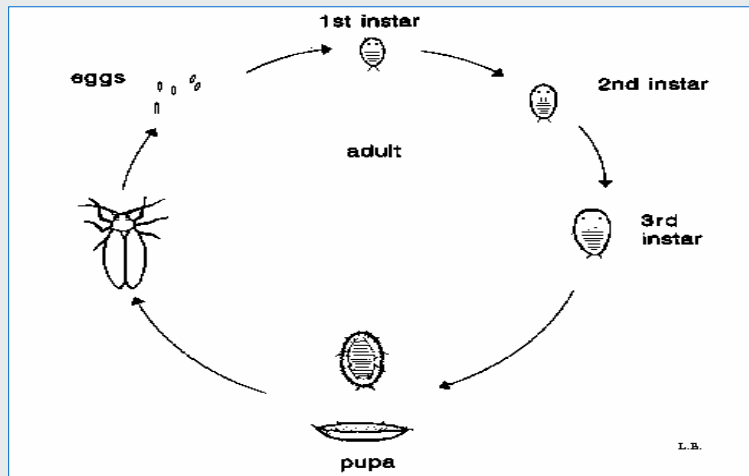
Mass trapping with yellow sticky tapes



Whitefly IPM



Whitefly Life Cycle



Whitefly Pest Species



Greenhouse whitefly

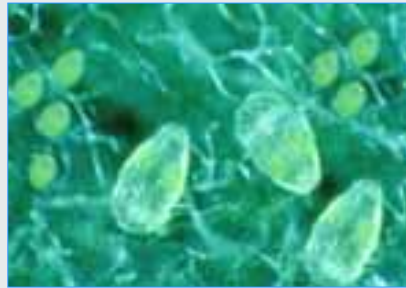


Silver leaf whitefly

Whitefly Pupal Stage



Greenhouse whitefly



Silver leaf whitefly

Damage Caused by Whiteflies



Whitefly Parasitoids



Encarsia formosa



Eretmocerus eremicus



Parasitoid release card



Parasitized Whitefly Pupae



Whitefly pupae parasitized by *Encarsia formosa*



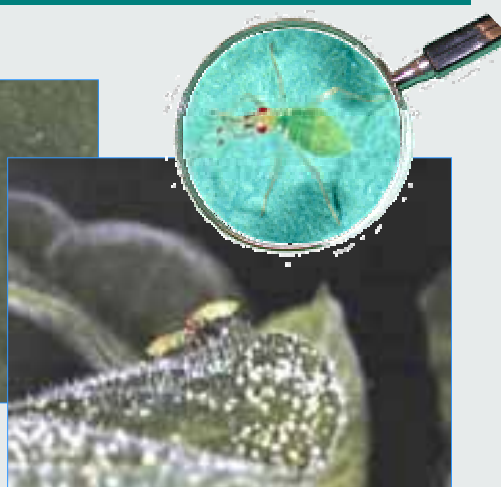
Whitefly pupae parasitized by *Eretmocerus eremicus*

Whitefly Predator

Dicyphus hesperus



Adult



Nymphs

Entomopathogenic Fungi for Whitefly Control



Infected nymphs



Infected adults in culture media



Infected pupae

Thrips IPM



Thrips Species on Greenhouse Crops



Western flower thrips



Onion thrips



Echinothrips

Immature Stages



1st and 2nd instar larvae



Pre-pupa and Pupa

Thrips Damage to Crops



Feeding damage to cucumber leaf



Damage to developing fruit

Thrips Fruit Damage



Feeding damage to pepper



Oviposition damage to tomato fruit



Feeding damage to cucumber

Thrips as Disease Vectors



Virus-infected plants



Symptom on leaves



Symptom on fruit

Tomato Spotted Wilt Virus

Predatory Mites



Amblyseius cucumeris



Hypoaspis miles



Amblyseius degenerans

Amblyseius cucumeris - Application Methods



Slow release sachet

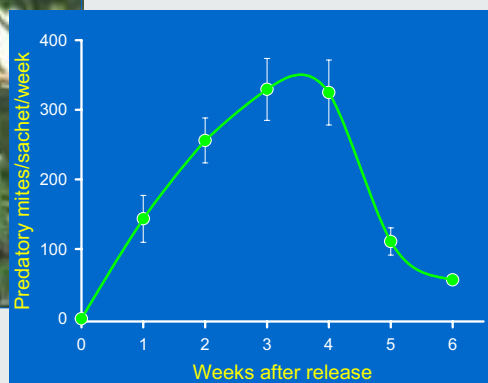


Introduction of *A. cucumeris* in loose bran on cucumber leaf

A. cucumeris – Monitoring of Quality Control of Slow Release Sachets



Monitor output from slow release sachets



Monitoring results